

Scaffolding (Con't)

Guard Rails

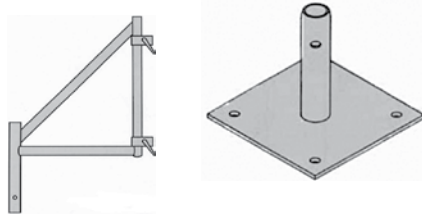
- Bil-Jax 5' Guard Rail
- Bil-Jax 7' Guard Rail
- Guard Rail Post



Minimum	Day	Week	4-Week
---------	-----	------	--------

Bases

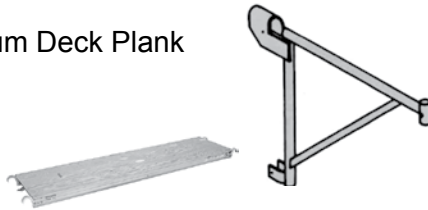
- Base Plate
- Screw Jacks with Base Plates
- Screw Jacks with Caster Socket
- 30" Outriggers



Minimum	Day	Week	4-Week
---------	-----	------	--------

Decking

- Werner 19" x 7' Aluminum Deck Plank
- 20" Side Bracket
- 24" Side Bracket
- 5' Steel Tow Board
- 7' Steel Tow Board



Minimum	Day	Week	4-Week
---------	-----	------	--------

Work Stages

- Bil-Jax 30" x 6' Workstage
- Bil-Jax 30" x 8' Workstage
- 6' Guard Panel Set
- 8' Guard Panel Set
- Narrow Outrigger Set



Minimum	Day	Week	4-Week
---------	-----	------	--------

Shore Posts

- Telescoping 6' 11' to 11' 4"



Minimum	Day	Week	4-Week
---------	-----	------	--------

Air Compressors, Air Tools & Hydraulic Tools

Selection Guide

Power Source/Type: Compressors are available in gas, diesel or electric power. Are there any environmental restrictions in the use of the gas or diesel? If an electric compressor is used, how far will it be from the power source? What is the amperage and voltage of the power source? Do you prefer a portable or towable compressor?

Number of Tools: How many tools will be used with the same air compressor?

Hose Requirements: How far is the compressor located from the work? If you own your air tools, what size hose & what type of couplers are required?

Air Requirements: What are the (A) Volume - Cubic feet per minute (CFM) and (B) Pressure - pounds per square inch (PSI) requirements of the air tool? See chart.

Tool	CFM	PSI	Tool	CFM	PSI
Angle Head Grinder	25	90	Post Drivers	42	90
Breaker Hammers:			Rock Drills		
60 lb.	60	80-110	55 lb.	50	80-100
90 lb.	85	80-110	Sand Blasters		
Chipping Hammers - 2"	35	80	35 lb. Pot	20	Variable
Impact Wrenches			100 lb. Pot	20-30	Variable
1/2"	18	90	300 lb. Pot	50-80	Variable
3/4"	25	90	Sanders	5	90
1"	35	100	Saws		
Nailers	8	90	Cut-Off	100-125	10
Paint Guns	4-12	30-50	Slab		90
Paint Pots - 3 Gal.	15	60	Scabblers - 5 hd	175	90
Pogo Stick Tampers	30	80-110	Staplers		90

Compressors

Air Compressors - Portable

- 9 CFM Electric
- 9 CFM Gas



Minimum	Day	Week	4-Week
---------	-----	------	--------

Compressors (Con't)

Air Compressors - Towable
(GrimmerSchmidt & Airman Models Available)

- 125 CFM - Gas
- 175 CFM - Gas
- 185 CFM - Diesel
- 210 CFM - Diesel
- 250 CFM - Diesel
- 375 CFM - Diesel
- 800 CFM - Diesel



Minimum	Day	Week	4-Week
---------	-----	------	--------

Air Compressor Accessories

- 3/8" x 50' Hose
- 3/4" x 50' Hose
- 1" x 50' Reinforced Hose
- 2" x 25' Bull Hose
- Oiler with 6' Whip Hose
- Dixon Air Hose Y Adaptor
- Tire Inflator Fitting



Minimum	Day	Week	4-Week
---------	-----	------	--------

Air Tools

Air Tampers

Ingersoll-Rand 4" Pad
for Back Fill



Minimum	Day	Week	4-Week
---------	-----	------	--------

Blow Pipes

4' Blow Pipe for
3/4" Air Hose



Minimum	Day	Week	4-Week
---------	-----	------	--------

Chipping Hammers

- APT 15 lb. class
Bush Head
Chisel
Point
- APT 30 lb. class Rivet Buster
Point



Minimum	Day	Week	4-Week
---------	-----	------	--------

Earth Boring Machines

- 2" Hole Hog with 50' Hose
- 3" Hole Hog with 50' Hose
- 4" Hole Hog with 50' Hose
- 4" to 6" Expander



Minimum	Day	Week	4-Week
---------	-----	------	--------

Impact Wrenches

- Anvil 1/2"
- Anvil 3/4"
- Anvil 1"



Minimum	Day	Week	4-Week
---------	-----	------	--------

Paving Breakers

- APT 30 lb. Class
- APT 60 lb. Class
- APT 90 lb. Class
- Asphalt Cutters
- Chisels
- Moil Points



Minimum	Day	Week	4-Week
---------	-----	------	--------

Post Drivers

- Rhino PD55 Pneumatic
Post Driver
- Stanley Hydraulic Post Driver
- Tee Post Adapters
- Channel Post Driver
- Telespar Adapters



Minimum	Day	Week	4-Week
---------	-----	------	--------

Rock Drills

- APT 55 lb. Class
- 2' to 6' Drill Steel
- 1 3/8" to 2 1/2" Carbide
and Steel Bits



Minimum	Day	Week	4-Week
---------	-----	------	--------

Air Tools (Con't)

Sand Blasters

Schmidt 300 lb. Pot
1" x 25' Hose Extension
Deadman Shutoff
Respirator and Filter



Minimum	Day	Week	4-Week
---------	-----	------	--------

Scabblers

5 Head - Finish
5 Head - Rough



Minimum	Day	Week	4-Week
---------	-----	------	--------

Scalers

Long Reach
2" & 4" Chisel
12" Scraper Blade



Minimum	Day	Week	4-Week
---------	-----	------	--------

Hydraulic Power Pack

Stanley Hydraulic Post Driver
50' Twin Line



Minimum	Day	Week	4-Week
---------	-----	------	--------

The Complete Source
Since 1953



Cleaning and Floor Maintenance Equipment

Selection Guide

Proper surface cleaning & preparation is a must! Below are some considerations so we can recommend the right equipment for the job.

The Job: Let us know what kind of work you need to do. How big is the area you are cleaning? What kind of surface are you working with? Are you working inside or outside?

Floor Maintenance: What type of floor are you working on? How big is the area you are working on?

Cleaning Equipment

Pressure Washers

2400 psi Hot
3000 psi Cold
50' Extension Hose
Chemical Attachment
Filter with Stand



Note: All rates are Plus Fuel

Minimum	Day	Week	4-Week
---------	-----	------	--------

Vacuums

10 Gallon Wet-Dry Vacuum

Note: A complete line of vacuum attachments available



Minimum	Day	Week	4-Week
---------	-----	------	--------

Yard Magnets

36" Yard Magnet



Minimum	Day	Week	4-Week
---------	-----	------	--------

Sweepers

3 Wheel Sweeper 6' & 8' Width
60" Attachment for Skid Steer



Minimum	Day	Week	4-Week
---------	-----	------	--------