

**Aerial Access Equipment**

**Selection Guide**

We want to help you select the right aerial access equipment for the job. Below are some questions & terms to help you in that selection.

**The Job:** Let us know what kind of work you need to do.

**Working Height:** Maximum height at which you need to work.

**Platform Height:** Subtract six (6) feet from working height to arrive at the maximum platform height of the equipment. All heights listed in this catalog are maximum platform heights.

**Over-Reach:** Can the equipment be placed directly below the work area or are there obstacles that require equipment capable of reaching over or around them?

**Platform Size/Capacity:** Does the job require you to lift only personnel & tools, or is there a need for materials to be elevated as well? The size & weight of your load must be matched to the platform size & capacity of the equipment.

**Moving:** Does the job require you to move from place to place frequently? If so, a self-propelled lift is required.

**Ground Level Factors:** Are you working on a smooth slab or on rough terrain? Is the surface level & firm? Are there any weight restrictions? Are you restricted to fuel type due to lack of ventilation or other environmental concerns? Is electric power available at the site? Do you have complete access to your work site? Dimensions of building entrances, doorways, ramps & obstacles need to be considered. Does the site have a freight dock or ground level entrance?

**Scaffolding:** When scaffolding is required, we need to know if you need wide or narrow scaffolding and the length, width and height of a job. Will the scaffolding be free-standing or against a wall? Will the scaffolding be stationary or are casters needed?

**Ladders:** Observe & follow all safety & correct usage labels found on each ladder.

**Ladders**

**Step Ladders - Aluminum or Fiberglass**

Werner 4' Step

Werner 6' Step

Werner 8' Step

Werner 10' Step

Werner 12' Step

Werner 16' Step



Minimum Day Week 4-Week

**Extension Ladders  
Aluminum or Fiberglass**

Werner 16' Extension

Werner 20' Extension

Werner 24' Extension

Werner 28' Extension

Werner 32' Extension

Werner 36' Extension

Werner 40' Extension



Minimum Day Week 4-Week

**Aerial Lifts**

**Personnel Lifts**

Genie 24' Personnel DC Lifts

Genie 30' Personnel DC Lifts

Genie 36' Personnel DC Lifts

Genie 40' Personnel DC Lifts



Minimum Day Week 4-Week

**Aerial Lifts (Con't)**

**Scissor Lifts**

- 18' Electric Scissor Lift  
33" x 63" Platform
- 19' Electric Scissor Lift  
30" x 72" Platform Height
- 20' Electric Scissor Lift  
33" x 93" Platform
- 25' Electric Scissor Lift  
60" x 110" Platform
- 26' Electric Scissor Lift  
31" x 89" Platform
- 26' Electric Scissor Lift  
45 5/8" x 89" Platform
- 26' Scissor Lift - Dual Fuel  
4 x 4 All Terrain Tires  
61" x 91" Platform
- 32' Electric Scissor Lift  
45 5/8" x 89" Platform
- 32' Scissor Lift - Dual Fuel  
4 x 4 All Terrain Tires  
61" x 91" Platform



Minimum	Day	Week	4-Week

**Boom Lifts**

- Genie TMZ34/19 - 34' Platform Height  
Towable Boom - 19' Outreach
- Genie TZ34/20 - 34' Platform Height  
Towable Boom - 20' Outreach
- Harness & Lanyard (required)



Minimum	Day	Week	4-Week

**Boom Lifts**

- 30' Articulating 2-man  
2' 6" x 4' platform
- 42' Telescoping 2-man  
2' 6" x 4' platform
- 44' Articulating 2-man  
2' 6" x 4' platform
- 62' Articulating  
4' x 8' platform
- 76' Telescoping Boom with Jib  
4' x 8' platform
- 80' Articulating Boom with Jib  
4' x 8' platform
- 85' Telescoping Boom with Jib  
4' x 8' platform
- 125' Articulating Boom with Jib  
4' x 8' platform



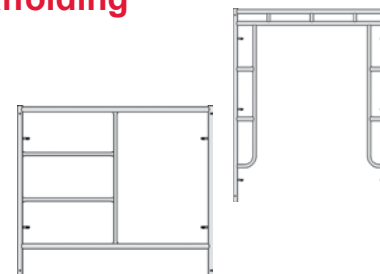
Harness & Lanyard (required)

Minimum	Day	Week	4-Week

**Scaffolding**

**Frames**

- Bil-Jax 6' 6" x 5'  
Walk through Frame
- Bil-Jax 5' x 5' Step Frame
- Bil-Jax 4' x 5' Step Frame
- Bil-Jax 3' x 5' Step Frame



Minimum	Day	Week	4-Week

**Braces**

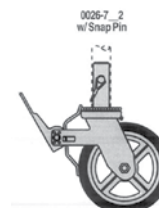
- Bil-Jax 2' x 7' Cross Braces
- Bil-Jax 3' x 7' Cross Braces
- Bil-Jax 4' x 7' Cross Braces
- Bil-Jax 7' Horizontal Brace



Minimum	Day	Week	4-Week

**Casters**

- Bil-Jax 8" Casters
- Bil-Jax 5" Workstage Caster



Minimum	Day	Week	4-Week



**When Only  
The Best  
Will Do!**

**Scaffolding (Con't)**

**Guard Rails**

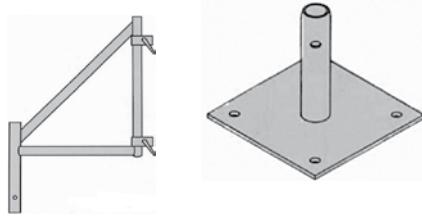
- Bil-Jax 5' Guard Rail
- Bil-Jax 7' Guard Rail
- Guard Rail Post



Minimum	Day	Week	4-Week
---------	-----	------	--------

**Bases**

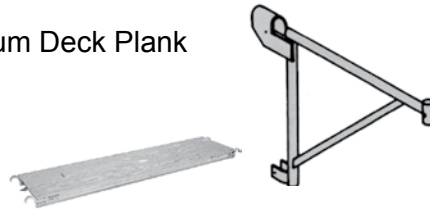
- Base Plate
- Screw Jacks with Base Plates
- Screw Jacks with Caster Socket
- 30" Outriggers



Minimum	Day	Week	4-Week
---------	-----	------	--------

**Decking**

- Werner 19" x 7' Aluminum Deck Plank
- 20" Side Bracket
- 24" Side Bracket
- 5' Steel Tow Board
- 7' Steel Tow Board



Minimum	Day	Week	4-Week
---------	-----	------	--------

**Work Stages**

- Bil-Jax 30" x 6' Workstage
- Bil-Jax 30" x 8' Workstage
- 6' Guard Panel Set
- 8' Guard Panel Set
- Narrow Outrigger Set



Minimum	Day	Week	4-Week
---------	-----	------	--------

**Shore Posts**

- Telescoping 6' 11' to 11' 4"



Minimum	Day	Week	4-Week
---------	-----	------	--------

**Air Compressors, Air Tools & Hydraulic Tools**

**Selection Guide**

**Power Source/Type:** Compressors are available in gas, diesel or electric power. Are there any environmental restrictions in the use of the gas or diesel? If an electric compressor is used, how far will it be from the power source? What is the amperage and voltage of the power source? Do you prefer a portable or towable compressor?

**Number of Tools:** How many tools will be used with the same air compressor?

**Hose Requirements:** How far is the compressor located from the work? If you own your air tools, what size hose & what type of couplers are required?

**Air Requirements:** What are the (A) Volume - Cubic feet per minute (CFM) and (B) Pressure - pounds per square inch (PSI) requirements of the air tool? See chart.

Tool	CFM	PSI	Tool	CFM	PSI
Angle Head Grinder	25	90	Post Drivers	42	90
Breaker Hammers:			Rock Drills		
60 lb.	60	80-110	55 lb.	50	80-100
90 lb.	85	80-110	Sand Blasters		
Chipping Hammers - 2"	35	80	35 lb. Pot	20	Variable
Impact Wrenches			100 lb. Pot	20-30	Variable
1/2"	18	90	300 lb. Pot	50-80	Variable
3/4"	25	90	Sanders	5	90
1"	35	100	Saws		
Nailers	8	90	Cut-Off	100-125	10
Paint Guns	4-12	30-50	Slab		90
Paint Pots - 3 Gal.	15	60	Scabblers - 5 hd	175	90
Pogo Stick Tampers	30	80-110	Staplers		90

**Compressors**

**Air Compressors - Portable**

- 9 CFM Electric
- 9 CFM Gas



Minimum	Day	Week	4-Week
---------	-----	------	--------