

QUALITY TOOLS & EQUIPMENT



SALES • RENTALS • SERVICE
Family Owned And Operated Since 1953

The complete source
Rental
Selection
Guide



Aerial Lifts

Personnel Lifts3
 Scissor Lifts3
 Boom Lifts4

Ladders

Step Ladders - Aluminum or
 Fiberglass.....3
 Aluminum or Fiberglass3

Scaffolding

Frames4
 Braces4
 Casters4
 Guard Rails4
 Bases.....4
 Decking4
 Work Stages5
 Shore Posts5

Air Compressors

Air Compressors - Portable5
 Air Compressors - Towable5
 Accessories5

Air Tools

Air Tampers5
 Blow Pipes5
 Chipping Hammers5
 Impact Wrenches5

Hydraulic Tools

Paving Breakers6
 Post Drivers6

Rock Drills6
 Sand Blasters6
 Scabblers6
 Scalars6

Cleaning Equipment

Maintenance Equipment6
 Pressure Washers6

Floor Equipment

Vacuums6
 Yard Magnets6
 Sweepers6

Floor Maintenance Equipment

Edgers and Strippers7
 Sanders7

Finishing

Bull Floats7
 Grinders - Planers7
 Jitterbugs7
 Power Trowels8

Forming & Pouring

Concrete Bucket7
 Concrete Buggies7
 Concrete Blankets8
 Mixers7
 Rebar Benders - Cutters7
 Vibrators7
 Wheelbarrows7

Drilling & Sawing

Brick Saws8

Core Drilling8
 Cut-Off Saws8
 Slab Saws8
 Tile Saws8

Electrical

Greenlee Cable Systems8
 Greenlee Electrical Testing
 Equipment9

Plumbing

Greenlee Pipe/Conduit/PVC
 Benders & Accessories9

Mechanical

Greenlee Knockout Sets9
 Pipe Stands/Reel Jacks9

Excavation

Backhoes10
 Compact Loader Backhoe11
 Compact Track Loaders10
 Grading Tractors10
 Line Locators11
 Mini Excavators11
 Post Hole Diggers10
 Skid Steer Loaders10
 Trenchers11

Compaction

Plates11
 Rollers11
 Tampers11

The Benefits of Rental

1. Maintenance

Equipment rented on a day-to-day basis includes full maintenance. The user needs no repair shop, spare parts supply, mechanics, or maintenance records.

2. Breakdown

Costs related to breakdowns of owned equipment are not applicable to rented equipment. When rented equipment breaks down, it is replaced, thus less down time.

3. Warehousing

Warehousing facilities are seldom needed for rental equipment. Renting makes it possible for contractors to operate with less overhead.

4. Mobility

Equipment rental offers the contractor or customer mobility that does not exist with owned equipment. A contractor can bid on a job several hundred miles away based on renting equipment needed near the jobsite. Availability and convenience have become one of the strongest arguments against ownership.

5. Personal Property Taxes and Licences

There are no personal property taxes or license costs for rented equipment.

6. Inventory Control

Another advantage in renting is better inventory control. Contractors have less inventory loss due to theft when equipment is rented. Equipment signed for at an equipment rental business which must ultimately be returned is watched with sharper eyes.

7. Obsolescence

Day-to-day renting eliminates obsolescence. Ownership risks being handicapped with slow, unwieldy equipment. An equipment rental business provides the latest types and models of equipment.

8. Correct Equipment for the Job

Ownership forces another kind of inefficiency through use of the wrong size or type of equipment for a given job, even though the equipment is not obsolete. This can mean additional, though hidden, costs. Rental insures the correct equipment for the job.

9. Minimum Equipment for the Job

Equipment ownership becomes particularly expensive when the equipment is idle. When ownership of basic equipment is combined with rental; as needed, idle time is minimized.

10. Cost Control

Better cost control is possible with rented equipment. Knowing the true costs of owned equipment is difficult. Rented equipment offers one accountable cost figure - that shown on the rental invoice.

11. Conservation of Capital

Renting conserves and frees capital for other, potentially more profitable uses.

12. Increases Borrowing Capacity

The equipment user who rents rather than buys finds borrowing easier because they have a better ratio of assets to liabilities. Since the equipment does not appear as a liability on his balance sheet, the normal line for bank credit is not disturbed. This can be important in securing construction bonds.

FAMILY OWNED AND OPERATED SINCE 1953

Generators

Portable	11
Towable.....	11

Lighting

Towable	12
Portable	12

Hand Tools

Bolt Cutters	12
Torque Multiplier	12

Surveying Instruments

Lasers	12
Optical	12

Traffic Safety

Barricades	12
Cones	12
Signs	12

Heaters

Infrared	13
Kerosene	13
Propane	13
Propane Bottles	13

Ventilating Equipment

Air Movers	13
Man Hole Blowers	13
Evaporative Coolers	13
Pedestal Fans	14
Venturi Fans	14

Forklifts

Warehouse	14
Rough Terrain	14

Telescoping	14
Forklift Accessories	14

Material Handling Equipment

Hoists/Come-A-Longs	14
Industrial Rollers	14
Jacks	14
Jack - Automotive	15
Porta Power Rams	15
Roustabouts pipe Mover	15
Glass Handling Suction Cups	15

Lawn Tools

Hand Lawn Tools	15
Lawn Roller	15
Lawn Aerators & Lawn Rakes	15
Sod Cutters	15
Stump Grinders	15
Wood Chippers	15

Electric Power Tools

Drills	16
Impacts	16
Heat Guns	16
Grinders/Polishers	16
Shears	16
Woodworking	16
Saws	16
Screw Guns	17
Rotary Hammer	17
Demolition	17

Extension Cords

Cords	17
-------------	----

Cord Accessories & Power Distribution Box.....	17
--	----

Powder Actuated

Stud Guns	17
-----------------	----

Pumps

Hydrostatic Pumps	18
Submersible Pumps	18
Trash Pumps	18
Diaphragm Pump	18

Pump Accessories

Garden Hoses	18
Discharge Hoses	18
Suction Hoses	18
Adapters	18

Trailers

Single Axle	18
Tandem Axle	19
Dump Trailer	19
Accessories	19
Water Wagons & Trucks	19

Welding Equipment

Plasma Cutters	19
Portable	19

Generators

Towable Generator	20
-------------------------	----

Vehicles

Golf Carts	20
Utility Carts	20

Customer Service

• Rate Structure

1 day = 24 hours, 1 week = 7 days, 4 weeks = 28 days

• Metered Equipment

1 day = 8 hours, 1 week = 40 hours, 4 weeks = 160 hours

• Double Shift Rates

1-1/2 times day, week, or 4 week rate (whichever applies)

• Triple Shift Rates

2 times day, week, or 4 week rate (whichever applies)

• Overtime Charges

1/6 daily rate per hour, 1/4 weekly rate per day

• all rates are plus fuel

- please call for quotation on delivery & pick up charges

- theft and damage charges are 14% of rental amount

- environmental fee is 2%

How To Order

- Orders and reservations are accepted by phone, fax, and e-mail.
- Orders can be placed anytime between 7:00 a.m. to 5:00 p.m. Monday through Friday and 8:00 a.m. to 12:00 p.m. Saturdays.

Payment Options

- Frank's Supply accepts cash, checks, VISA, Master Card, American Express and DISCOVER. Cash customers must present credit card for deposit.

Commercial Credit Application

- Qualified companies, government agencies, and institutions are encouraged to apply for credit. Call your Frank's Supply representative for your credit application.
- This application can be used by individuals requesting to be added to Frank's Supply's mailing list.

Aerial Access Equipment

Selection Guide

We want to help you select the right aerial access equipment for the job. Below are some questions & terms to help you in that selection.

The Job: Let us know what kind of work you need to do.

Working Height: Maximum height at which you need to work.

Platform Height: Subtract six (6) feet from working height to arrive at the maximum platform height of the equipment. All heights listed in this catalog are maximum platform heights.

Over-Reach: Can the equipment be placed directly below the work area or are there obstacles that require equipment capable of reaching over or around them?

Platform Size/Capacity: Does the job require you to lift only personnel & tools, or is there a need for materials to be elevated as well? The size & weight of your load must be matched to the platform size & capacity of the equipment.

Moving: Does the job require you to move from place to place frequently? If so, a self-propelled lift is required.

Ground Level Factors: Are you working on a smooth slab or on rough terrain? Is the surface level & firm? Are there any weight restrictions? Are you restricted to fuel type due to lack of ventilation or other environmental concerns? Is electric power available at the site? Dimensions of building entrances, doorways, ramps & obstacles need to be considered. Does the site have a freight dock or ground level delivery entrance?

Scaffolding: When scaffolding is required, we need to know if you need wide or narrow scaffolding and the length, width and height of the job. Will the scaffolding be free-standing or against a wall? Will the scaffolding be stationary or are casters needed?

Ladders: Observe & follow all safety & correct usage labels found on each ladder.

Ladders

Step Ladders - Aluminum or Fiberglass

Werner 4' Step

Werner 6' Step

Werner 8' Step

Werner 10' Step

Werner 12' Step

Werner 14' Step

Werner 16' Step



Minimum Day Week 4-Week

Extension Ladders

Aluminum or Fiberglass

- Werner 16' Extension
- Werner 20' Extension
- Werner 24' Extension
- Werner 28' Extension
- Werner 32' Extension
- Werner 36' Extension
- Werner 40' Extension



Minimum Day Week 4-Week

Aerial Lifts

Personnel Lifts

- Genie 12' Runabout Lifts
- Genie 15' Runabout Lifts
- Genie 20' Runabout Lifts
- Genie 30' Personnel DC Lifts
- Genie 40' Personnel DC Lifts



Minimum Day Week 4-Week

Scissor Lifts

- 19' Electric Scissor Lift
30" x 72" Platform Height
- 26' Electric Scissor Lift
31" x 89" Platform
- 26' Electric Scissor Lift
45 5/8" x 89" Platform
- 26' Scissor Lift - Dual Fuel
4 x 4 All Terrain Tires
61" x 91" Platform
- 32' Electric Scissor Lift
45 5/8" x 89" Platform
- 32' Scissor Lift - Dual Fuel
4 x 4 All Terrain Tires
61" x 91" Platform
- 40' Electric Scissor Lift
4 x 4 All Terrain Tires
65" x 115" Platform



Minimum Day Week 4-Week

FAMILY OWNED AND OPERATED SINCE 1953

Towable Boom Lifts

JLG T350 - 35' Platform Height
Towable Boom - 20' Outreach

JLG T500J - 50' Platform Height
Towable Boom - 31'6" Outreach

Harness & Lanyard (required)



Minimum	Day	Week	4-Week

Boom Lifts

30' - 34' Articulating Electric
2' 6" x 4' platform

40' - 45' Telescoping Diesel
6' & 8' platform

40' - 45' Articulating Dual Fuel or Diesel
6' & 8' platform

45' Articulating Electric
6' & 8' platform

60' - 65' Telescoping Electric
6' & 8' platform

60' Articulating Dual Fuel
6' & 8' platform

80' Articulating Boom
6' & 8' platform

80' - 85' Telescoping Boom
6' & 8' platform

125' Articulating Boom with Jib
8' platform

135' Telescoping Boom
8' Platform

Harness & Lanyard (required)



Minimum	Day	Week	4-Week

Scaffolding

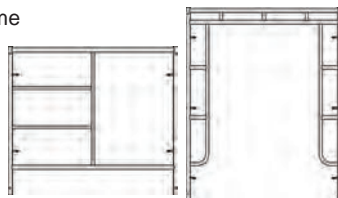
Frames

Bil-Jax 6' 6" x 5' Walk through Frame

Bil-Jax 5' x 5' Step Frame

Bil-Jax 4' x 5' Step Frame

Bil-Jax 3' x 5' Step Frame



Minimum	Day	Week	4-Week

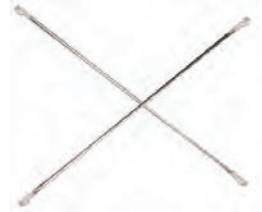
Braces

Bil-Jax 2' x 7' Cross Braces

Bil-Jax 3' x 7' Cross Braces

Bil-Jax 4' x 7' Cross Braces

Bil-Jax 7' Horizontal Brace



Minimum	Day	Week	4-Week

Casters

Bil-Jax 8" Casters

Bil-Jax 5" Workstage Caster



Minimum	Day	Week	4-Week

Guard Rails

Bil-Jax 5' Guard Rail

Bil-Jax 7' Guard Rail

Guard Rail Post



Minimum	Day	Week	4-Week

Bases

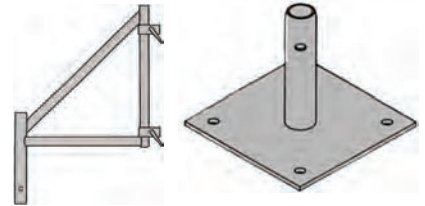
Base Plate

Screw Jacks with
Base Plates

Screw Jacks with
Swivel

Screw Jacks with
Caster Socket

30" Outriggers



Minimum	Day	Week	4-Week

Decking

Werner 19" x 7' Aluminum Deck Plank

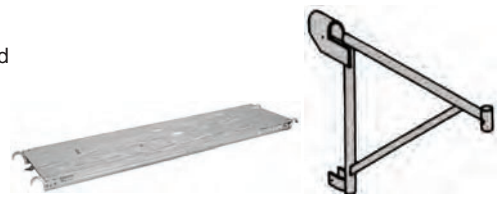
20" Side Bracket

24" Side Bracket

5' Steel Toe Board

7' Steel Toe Board

Board



Minimum	Day	Week	4-Week

Work Stages

- Bil-Jax 30" x 6' Workstage
- Bil-Jax 30" x 8' Workstage
- 6' Guard Panel Set
- 8' Guard Panel Set
- Narrow Outrigger Set



Minimum	Day	Week	4-Week
---------	-----	------	--------

Shore Posts

- Telescoping 6' 11' to 11' 4"



Minimum	Day	Week	4-Week
---------	-----	------	--------

Air Compressors, Air Tools & Hydraulic Tools

Selection Guide

Power Source/Type: Compressors are available in gas, diesel or electric power. Are there any environmental restrictions in the use of the gas or diesel? If an electric compressor is used, how far will it be from the power source? What is the amperage and voltage of the power source? Do you prefer a portable or towable compressor?

Number of Tools: How many tools will be used with the same air compressor?

Hose Requirements: How far is the compressor located from the work? If you own your air tools, what size hose & what type of couplers are required?

Air Requirements: What are the (A) Volume - cubic feet per minute (CFM), and (B) Pressure - pounds per square inch (PSI) requirements of the air tool? See chart.

Tool	CFM	PSI	Tool	CFM	PSI
Angle head Grinder	25	90	Angle head Grinder	42	90
Breaker Hammers:			Breaker Hammers:		
60 lb.	60	80-110	60 lb.	50	80-100
90 lb.	85	80-110	90 lb.		
Chipping Hammers - 2"	35	80	Chipping Hammers - 2"20		Variable
Impact Wrenches			Impact Wrenches	20-30	Variable
1/2"	18	90	1/2"	50-80	Vari-
3/4"	25	90	3/4"	5	able90
1"	35	100	1"		
nailers	8	90	nailers	100-125	10
Paint Guns	4-12	30-50	Paint Guns		90
Paint Pots - 3 Gal.	15	60	Paint Pots - 3 Gal.	175	90
Pogo Stick Tampers	30	80-110	Pogo Stick Tampers		90

Air Compressors - Portable

- 9 CFM Electric
- 9 CFM Gas
- 16 CFM Gas



Minimum	Day	Week	4-Week
---------	-----	------	--------

Air Compressors - Towable

Airman Models Available

- 185 CFM - Diesel
- 400 CFM - Diesel



Minimum	Day	Week	4-Week
---------	-----	------	--------

Air Compressor Accessories

- 3/8" x 50' Hose
- 3/4" x 50' Hose
- 2" x 25' Bull Hose
- Oiler with 6' Whip Hose
- Dixon Air Hose Y Adaptor
- Tire Inflator Fitting



Minimum	Day	Week	4-Week
---------	-----	------	--------

Air Tools

Air Tampers

- APT 4" Pad for Back Fill



Minimum	Day	Week	4-Week
---------	-----	------	--------

Blow Pipes

- 4' Blow Pipe for 3/4" Air Hose



Minimum	Day	Week	4-Week
---------	-----	------	--------

Chipping Hammers

- 15 lb. class Chipping Hammer Bush Head Chisel Point
- 30 lb. class Rivet Buster Point



Minimum	Day	Week	4-Week
---------	-----	------	--------

Impact Wrenches

- Anvil 1/2"
- Anvil 3/4"
- Anvil 1"



Minimum	Day	Week	4-Week
---------	-----	------	--------

FAMILY OWNED AND OPERATED SINCE 1953

Paving Breakers

30 lb. Class
60 lb. Class
90 lb. Class
Asphalt Cutters
Chisels
Moil Points



Minimum	Day	Week	4-Week

Post Drivers

Rhino PD55 Pneumatic Post Driver
Tee Post Adapters
Channel Post Drivers
Telespar Adapters



Minimum	Day	Week	4-Week

Rock Drills

55 lb. Class
2' to 6' Drill Steel
1 3/8" to 2 1/2" Carbide
and Steel Bits



Minimum	Day	Week	4-Week

Sand Blasters

Schmidt 300 lb. Pot
1" x 50" Blast Hose
Deadman Shutoff
Fresh Air Hood & Filter



Minimum	Day	Week	4-Week

Scabblers

5 Head - Rough



Minimum	Day	Week	4-Week

Scalers

Long Reach
2" & 4" Chisel
12" Scraper Blade



Minimum	Day	Week	4-Week

Cleaning and Floor

Maintenance Equipment

Selection Guide

Proper surface cleaning & preparation is a must! Below are some considerations so we can recommend the right equipment for the job.

The Job: Let us know what kind of work you need to do. How big is the area you are cleaning? What kind of surface are you working with? Are you working inside or outside?

Floor Maintenance: What type of floor are you working on? How big is the area you are working on?

Cleaning Equipment

Pressure Washers

3000 PSI Hot
3000 PSI Cold
3500 PSI Hot - Trailer Mounted
200 + 400 Gallon - Trailer Mounted
50' Extension Hose
Chemical Attachment
Filter with Stand



Note: All rates are Plus Fuel

Minimum	Day	Week	4-Week

Vacuums

10 Gallon Wet-Dry Vacuum

Note: A complete line of vacuum attachments available



Minimum	Day	Week	4-Week

Yard Magnets

36" Yard Magnet



Minimum	Day	Week	4-Week

Sweepers

3 Wheel Sweeper 8' Width
60" Attachment for Skid Steer



Minimum	Day	Week	4-Week

Floor Maintenance Equipment

Edgers and Strippers

Silver Line 7" Floor Edger
Electric Floor Stripper



Minimum	Day	Week	4-Week
---------	-----	------	--------

Sanders

Clark 17" Floor Maintainer
Silver-Line SL-8 Drum Sander
Sand Paper Adaptor
Pad Driver



Minimum	Day	Week	4-Week
---------	-----	------	--------

Concrete & Masonry Equipment

Selection Guide

Concrete and masonry work involve many types of equipment. Tell us as much as you can about your job, so we can recommend the most efficient & productive equipment.

The Job: Let us know what kind of work you need to do. Does the job involve new construction, remodeling or demolition? Are you working indoors or outdoors? Are you working with walls, footings, foundations or slabs? What is the size & thickness? How much concrete will you be handling? What kind of finish will be required? If demolition is involved, what are you breaking up? What size is it? How old is it? Are you going to re-pour concrete? Are you working in a confined area?

Concrete Equipment - Forming & Pouring

Concrete Bucket

Camlever 1/2 Yard
Concrete Bucket



Minimum	Day	Week	4-Week
---------	-----	------	--------

Mixers

6 cu. ft. Gas Concrete Mixer
9 cu. ft. Gas Concrete Mixer
8 cu. ft. Gas Mortar Mixer
12 cu. ft. Gas Mortar Mixer



Minimum	Day	Week	4-Week
---------	-----	------	--------

Wheelbarrows & Rebar Benders - Cutters

6 cu. ft. Wheel Barrow
5/8" to 3/4" Rebar Cutter/Bender



Minimum	Day	Week	4-Week
---------	-----	------	--------

Concrete Buggies

Hauls 16 cu. ft. / 2500 lbs.



Minimum	Day	Week	4-Week
---------	-----	------	--------

Vibrators

Oztec Concrete Vibrator
(incl. motor, shaft, head)
1" to 2 1/2" Heads
5' to 28' Shafts

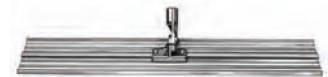


Minimum	Day	Week	4-Week
---------	-----	------	--------

Finishing

Bull Floats

45" Magnesium
6' Aluminum Handles



Minimum	Day	Week	4-Week
---------	-----	------	--------

Grinders - Planers

Edco 2 Head Electric Grinder
Edco 2 Head Gas Grinder
Strip - Sert Set
for Glue Removal
Diamond - Sert Set
for Concrete Removal
8" Diamond Head Grinder - Electric
10" Diamond Head Grinder - Gas
Edco 8" Concrete Planer - Gas
Edco 8" Concrete Planer - 240V Electric



Minimum	Day	Week	4-Week
---------	-----	------	--------

Jitterbugs

46" Tamper



Minimum	Day	Week	4-Week
---------	-----	------	--------

FAMILY OWNED AND OPERATED SINCE 1953

Concrete Blankets

6' x 25'
12' x 25'



Minimum	Day	Week	4-Week

Power Trowels

36" Power Trowel
46" Power Trowel



Minimum	Day	Week	4-Week

rilling & a ing

Brick Saws

14" Brick Saw
14" Block/Brick Blade
Saw Stand



Minimum	Day	Week	4-Week

Core Drilling

Hand Held Core Drill - Up to 4" Bit Capacity
Core Drilling Machine - Up to 8" Bit Capacity
Core Drilling Vacuum Assembly
Core Bit Adapter (1 1/4" - 7 to 5/8" - 11")
6" and 12" Bit Extensions
1" to 8" Diamond Bits



Minimum	Day	Week	4-Week

Cut-Off Saws

14" Electric Saw
14" Gas Saw
14" Dry Cut Diamond Blades



Minimum	Day	Week	4-Week

Slab Saws

Soff Cut 310 - Green Concrete
5" Blade - Cutting Depth 7/8" - 1 1/8"
Soff Cut X-150 Green Concrete
6" Blade - Cutting Depth 1" - 1 3/16"
Soff Cut X-450 Green Concrete
8" Blade - Cutting Depth 1" - 1 3/16"
8 HP Saw
14" Blade Guard
13 HP. Self Propelled Saw
14" Blade Guard
35 HP. Self Propelled Saw
18" Blade Guard
14" to 18" Diamond Blade (cured)
14" to 18" Diamond Blade (green)
14" to 18" Diamond Blade (asphalt)



Minimum	Day	Week	4-Week

Tile Saws

Husqvarna 10" Tile Saw 18" Capacity
Saw Stand



Minimum	Day	Week	4-Week

Electrical Mechanical & Plum ing Contractors Equipment

Selection Guide

- Conduit Benders
- Cutters
- Fish Tapes
- Pipe Chain Vise Stands
- Pipe Dies
- Pipe Wrenches
- Power pipe Vises
- Soil Pipe Cutters

Greenlee Cable Systems

GR6800 - Ultra Tugger Package 8K#
GR34137 - 7/8 x 600' Pulling Rope
GR579 - Rope Clevis 8K#
GR39903 - Swivel Connector 10K#
GR39109 - Swivel 10K#
GR8012 - 12" Hook Sheave 8K#
GR8018 - 18" Hook Sheave 8K#
GR8024 - 24" Hook Sheave 8K#
GR30488 - 0.25 - .49 Pulling Grip 1.3K#
GR30490 - 0.50 - 0.74 Pulling Grip 1.3K#
GR30492 - 0.75 - 0.99 Pulling Grip 1.3K#
GR30494 - 1.0 - 1.24 Pulling Grip 1.3K#
GR30496 - 1.25 - 1.49 Pulling Grip 1.3K#
GR30498 - 1.50 - 1.74 Pulling Grip 1.3K#
GR30500 - 1.75 - 2.24 Pulling Grip 9.6K#
GR30510 - 2.00 - 2.49 Pulling Grip 9.6K#
GR30512 - 2.50 - 2.99 Pulling Grip 9.6K#
GR30514 - 3.00 - 3.49 Pulling Grip 9.6K#
GR30516 - 3.50 - 3.99 Pulling Grip 9.6K#
GR629 - 5/8" Pulling Grip 6.5K#
GR624S - 5/8" Pulling Grip 3.2K#
GR624L - 5/8" Pulling Grip 3.2K#



Minimum	Day	Week	4-Week

Greenlee Pipe/Conduit/PVC Benders & Accessories

GR1818 - Mechanical Bender 1/2 - 2"
Ridgid, EMT, IMC



GR884 - Flip Top Hydraulic Bender 1 1/4 - 2"
Ridgid, EMT, IMC

Minimum Day Week 4-Week

Greenlee Pipe/Conduit/PVC Benders & Accessories

GR854 - Electric Bender 1/2 - 2"
Ridgid, EMT, IMC

GR1700 - Shoe Group Coated 1/2 - 2" Ridgid

GR881CT - Hydraulic Bender

GR1813 - Bending Table for 881 Bender

GR847 - Electric PVC Heater 1/2 - 6" 230V

GR851 - Electric PVC Heater 1/2 - 4" 115V

GR849 - Electric PVC Heater 1/2 - 2" 115V

GR857 - Roller Support for PVC Heaters

GR859-4 - PVC Plug Set for PVC Heaters



Minimum Day Week 4-Week

Greenlee Knockout Sets

GR7906SB - 1/2 - 2" Hydraulic Knockout Set

GR7310 - 1/2 - 4" Hydraulic Knockout Set

"



Minimum Day Week 4-Week

Pipe Stands/Reel Jacks

ST872 - Sumner Pipe Jack
with Roller Head - 24" - 47"



Minimum Day Week 4-Week

Ridgid Pipe Threading Equipment

00R - Ratchet Handle

12R - Ratchet Handle

450+ - Chain Tripod Pipe Vise



Minimum Day Week 4-Week

Ridgid Pipe Threading Equipment

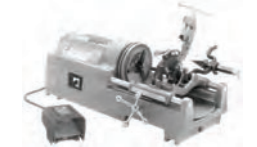
300 - Power Threading Machine
1/2 - 2" Capacity



Minimum Day Week 4-Week

Ridgid Pipe Threading Equipment

535 - Power Threading Machine
1/8 - 2" Capacity



Minimum Day Week 4-Week

Ridgid Pipe Threading Equipment

700 - Power Drive Threader



Minimum Day Week 4-Week

Ridgid Pipe Threading Equipment

1224 - Power Threading Machine
1/4 - 4" Capacity



Minimum Day Week 4-Week

Ridgid Pipe Threading Equipment

1822/1 - Power Threading Machine
1/8 - 2" Capacity



Minimum Day Week 4-Week

FAMILY OWNED AND OPERATED SINCE 1953

Dies, Wrenches, Cutters

1/8" to 2" NPT Pipe Dies

1/2" to 2" NPT Die Head Set for 12R

24" to 48" Pipe Wrenches

1/2" to 12" Pipe Cutters

6" Soil Pipe Cutter



Minimum	Day	Week	4-Week
---------	-----	------	--------

Excavation & Compaction Equipment

Selection Guide

If you're digging, moving, loading or compacting, the answers to the questions below will help us recommend the most efficient & productive equipment for you.

Excavation: What kind of work do you need to do? What is the size of the excavation? What is the depth, length, width & yardage? What kind of materials are you working with? Is it dirt, clay, sand, gravel, rocky soil, demolished asphalt, concrete, construction or demolition debris? Is there a size or weight restriction on any of the machinery that you will be using? What is the importance of compactness and maneuverability? Do you need a tracked or rubber tired machine? Do you need to load material into a truck?

Compaction: What are you compacting? Is it dirt, clay, sand, gravel, or asphalt? Is the soil wet or dry? Is it rocky? What size is the area to be compacted? Are you working in a trench, near a foundation or in an open area? What percent compaction (Proctor) is required? How many lifts (layers) of material need to be compacted?

Excavation

Post Hole Diggers

Ground Hog 2-Man Digger

4" to 12" Auger Sizes Available

12", 24", 36" Extensions

Note: All rates are Plus Fuel



Minimum	Day	Week	4-Week
---------	-----	------	--------

Backhoes

Case & Caterpillar

14' 4" Digging Depth

Extend-a-Hoe Model Available

18' 2" Digging Depth

Breaker Attachment

Buckets: 12", 18", 24", 36"



Minimum	Day	Week	4-Week
---------	-----	------	--------

Grading Tractors

Case 570 XLT with Gannon Blade



Minimum	Day	Week	4-Week
---------	-----	------	--------

Skid Steer Loaders

Bobcat Model Available

1/8 Yard Diesel - 36" Wide

1/3 Yard Diesel - 60" Wide

1/2 Yard Diesel - 66" Wide

1/8 Yd, 1/3 Yd, Dirt Buckets

1/8 Yd, 1/3 Yd, Tooth Buckets

68" - 72" Grapple Buckets

60" Sweeper Attachments

Auger Attachments

6", 9", 12", 18", 24", 30" Augers

24" Auger Extensions

Hydraulic Breakers

Demolition Hammer Points

Yanmar S220R-1 - 2200lb cap. 70" Bucket



1,200 lb. Capacity Forks

Minimum	Day	Week	4-Week
---------	-----	------	--------

Compact Track Loaders

ASV PT-80 - 1/2 Yard Diesel

Bobcat T450 - 1400lb. Cap 56" Bucket



Minimum	Day	Week	4-Week
---------	-----	------	--------

Mini Excavators

2900 lbs. Mini Excavators

6' 3" Digging Depth

4600 lbs. Mini Excavators

7' 5" Digging Depth

7500 lbs. Mini Excavators

10'6" Digging Depth

12,000 lbs. Mini Excavators

12'9.5" Digging Depth

12", 16", 18", 24" Buckets



Minimum	Day	Week	4-Week
---------	-----	------	--------

Compact Loader Backhoe

Loader, Backhoe
8' 4" Digging Depth
12" & 16" Buckets
Diesel



Minimum	Day	Week	4-Week

Trenchers

11 HP Walk Behind 4" x 24" Trench
18 HP Walk Behind 4" x 36" Trench
40/45 HP Ride On



Note: All rates are based on 6" - 8" cut.
Call for quotations on 10" - 12" cut. Setup
charge for special cuts and conditions.

Minimum	Day	Week	4-Week

Line Locators

Subsite Line Locator
Subsite Induction Clamp



Minimum	Day	Week	4-Week

Compaction

Tampers

Tamper 11" x 13" Shoe
Tamper 6" x 13" Shoe



Minimum	Day	Week	4-Week

Plates

Compactor 13" x 21" - asphalt
Compactor 21" x 19" with water kit for asphalt
Compactor 20" x 24" - dirt



Minimum	Day	Week	4-Week

Rollers

Radio Controlled Trench Roller
24" & 33" Drums



Minimum	Day	Week	4-Week

Rollers

Ride-On Smooth Drum Roller
36" Drum - Single or Double Vibratory
40" Drum Double Vibratory
48" Drum Double Vibratory



Minimum	Day	Week	4-Week

Generators & Lighting Equipment

Selection Guide

We can help you match the generator with the equipment being powered. Below are helpful charts and information needed for you to select the correct generator for your job.

Electric Load Requirement: What devices are you powering from your generator? What are the electrical requirements, voltage, amperage, (Running versus startup - see chart below) & phase? How much cord or cable will be used?

Load Requirement: The actual output of a generator is effected by altitude & temperature. Please call us to be sure you receive the right unit for your job.

Generators

Portable

4 KW Gas Generator
6 KW Gas Generator
10 KW Gas Generator



Minimum	Day	Week	4-Week

Towable

20 KW Diesel Generator
40 KW Diesel Generator
64 KW Diesel Generator
95 KW Diesel Generator
120 KW Diesel Generator
183 KW Diesel Generator
264 KW Diesel Generator
(Ask About Accessories)
Power Distribution Box
100' Distribution Cord
50' Distribution Cord
50' 4/0 Distribution Cables



Minimum	Day	Week	4-Week

FAMILY OWNED AND OPERATED SINCE 1953

Lighting

Portable

Bulldog Quartz Light on Stand
- 500 Watt Lights
Bulldog Quartz Light on Stand
- 1000 Watt Lights



Minimum	Day	Week	4-Week
---------	-----	------	--------

Towable

28' Telescoping Towable
Diesel Light Tower
4000 Watt Lighting with 4 KW Generator



Note: All rates are Plus Fuel

Minimum	Day	Week	4-Week
---------	-----	------	--------

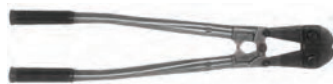
Hand Tools Instruments & Miscellaneous Equipment

Selection Guide

- Conduit Benders
- Cutters
- Fish Tapes
- Pipe Chain Vise Stands

Bolt Cutters

Bolt Cutters 24", 36"



Minimum	Day	Week	4-Week
---------	-----	------	--------

Torque Multipliers

Proto Torque Multiplier
0 - 1200 Ft. lbs.



Minimum	Day	Week	4-Week
---------	-----	------	--------

Traffic Safety

Barricades

Barricade with Flasher Light
Barricade without Flasher Light



Minimum	Day	Week	4-Week
---------	-----	------	--------

Cones

18" Traffic Cones
28" Traffic Cones



Minimum	Day	Week	4-Week
---------	-----	------	--------

Signs

Sign Stand with 3 Flags
Construction Sign
"Flagman Ahead"
Construction Sign
"Road Closed Ahead"
Construction Sign
"Stop and Slow Paddle"



Minimum	Day	Week	4-Week
---------	-----	------	--------

Surveying Instruments

Lasers

Visible Self Leveling Laser
Self Leveling Electronic Level
Pipe Laser



Minimum	Day	Week	4-Week
---------	-----	------	--------

Optical

Builders Transit



Minimum	Day	Week	4-Week
---------	-----	------	--------



Frank's Supply - The Best for the Best.

Heating & Ventilating Equipment

Selection Guide

Adequate heating or cooling of a job site pays off in increased comfort & efficiency. Below you'll find some helpful information to aid in your equipment selection.

Heating Areas: What is the cubic footage of the area to be heated? Is there adequate ventilation? Is the area closed in so that heat loss can be minimized? Do you require air circulation to speed any curing or drying? Is electric power available?

Personnel: Will people be working in the same location as the heaters? Will the heaters be attended or unattended?

Temperature: What is the desired inside temperature? Correct heater selection relies on calculation of temperature rise. Temperature rise is calculated by subtracting average outside temperature or ambient temperature from the desired inside temperature. **IMPORTANT:** Because you are calculating temperature rise, your desired inside temperature will drop if outside temperature should dip below average.

B.T.U.'s: Heaters are rated in BTU's (British Thermal Units). The objective is to replace heat at the same rate as it is lost. The following formula is used as a "rule-of-thumb" for selecting the proper heater.

Formula: $BTU\ Heat\ Loss = Cu.\ ft.\ of\ area \times 0.133 \times Temperature\ Rise$

Example: Building Size: $100 \times 60 \times 14 = 84,000\ cu.\ ft.$ To calculate Temperature Rise: Outside Temperature = -2°

Desired Temperature = 55°

Temperature Rise = 57°

Calculation: $84,000 \times 0.133 \times 57 = 636,804\ BTU\ Heat\ Required.$

Air Calculation: Circulating air by use of a forced air heater or supplemental fan improves efficiency & stretches your heating dollar.

Heaters

Infrared

12,000 BTU Heater
24,000 BTU Heater



Minimum	Day	Week	4-Week
---------	-----	------	--------

Kerosene

100,000 BTU Heater
150,000 BTU Heater
600,000 BTU Heater



Minimum	Day	Week	4-Week
---------	-----	------	--------

Propane

150,000 BTU Forced Air Heater
375,000 BTU Forced Air Heater
250,000 BTU Forced Air Heater
400,000 BTU Indirect - Propane or Natural Gas
Forced Air Heater



Minimum	Day	Week	4-Week
---------	-----	------	--------

Propane Bottles

20 lb.
40 lb.
100 lb.
33 lb. Fork Lift Bottle
Bottle Manifold



Note: Bottle Rates Include Fuel

Minimum	Day	Week	4-Week
---------	-----	------	--------

Ventilating Equipment

Air Movers

Air Mover 30" Diameter
14,200 CFM - Box Fan



Minimum	Day	Week	4-Week
---------	-----	------	--------

Man Hole Blowers

Manhole Blower Electric with 25' Hose
Manhole Blower Gas with 25' Hose
Carpet Drying Attachment Available



Minimum	Day	Week	4-Week
---------	-----	------	--------

Evaporative Coolers

36" TPI - PortaCool Cooler
3900FMP Waycool Cooler
4400FMP Waycool Cooler



Minimum	Day	Week	4-Week
---------	-----	------	--------

FAMILY OWNED AND OPERATED SINCE 1953

Pedestal Fans

24" Fan



Minimum Day Week 4-Week

Venturi Fans

AM8 Air Mover



Minimum Day Week 4-Week

Material Handling Equipment

Selection Guide

Let us know about the material you're handling. We have a tremendous selection of equipment, ranging from handtrucks to a 10,000 lb. forklift.

Material: What are you working with? What does it weigh? What are the physical dimensions? How far do you have to move the material? How high do you have to lift?

Work Area: Are you working inside or outside? What kind of surface are you working on? Slab floor, dirt or asphalt. Is it level? Are there any weight, size or environmental restrictions? Is the area confined? Are there any obstacles?

Forklifts

Warehouse

3000 lb. Fork Lift - 10' Lift
- Dual Fuel
5000 lb. Fork Lift - 15' Lift
- Dual Fuel



Minimum Day Week 4-Week

Rough Terrain

6000 lb. Fork Lift - 21' Lift
-Straight Mast



Minimum Day Week 4-Week

Telescoping

Genie GTH-5519
5000 lb. - 19' Lift 4 x 4
Sky Trak 6036 - 6000 lb.
Forklift - 36' Lift 4 x 4
Skytrak 6042 - 6000 lb.
Forklift - 42' Lift 4 x 4
Sky Trak 8042 - 8000 lb.
Forklift - 42' Lift 4 x 4
Sky Trak 10054 - 10,000 lb. Forklift - 54' Lift 4 x 4
JLG - G12-55A - 12,000 lb. Forklift 55' Lift 4 x 4
Note: All Rates are Plus Fuel



Minimum Day Week 4-Week

Forklift Accessories

0.8 Yd. Utility Bucket
1 Yd. Utility Bucket
1-1/4 Yd. Utility Bucket
4" x 72" Fork Extensions
5" x 72" Fork Extensions
8' Safety Work Platform
12' Truss Boom 2000 lb. Capacity
Lift-N-Tow Attachment
Universal Fit Lift Hook - 10,000 lb. Capacity



Minimum Day Week 4-Week

Hoists/Come-A-Longs

1/2 Ton Chain Hoist
1 Ton Chain Hoist
1 1/2 Ton Chain Hoist
2 Ton Chain Hoist
3/4 Ton Cable Come-A-Long
3 Ton Chain Come-A-Long
6 Ton Chain Come-A-Long



Minimum Day Week 4-Week

Industrial Rollers

Hillman 30 Ton Roller Kit



Minimum Day Week 4-Week

Jacks

Pallet Jack
Narrow Pallet Jack
High Lift Pallet Jack
5 Ton House Jack
6 Ton Hydraulic Jack
12 Ton Hydraulic Jack
17.5 Ton Hydraulic Jack
20 Ton Hydraulic Jack
35 Ton Hydraulic Jack



Minimum Day Week 4-Week

Jacks - Automotive

1 1/2 to 2 Ton Floor Jack
Transmission Jacks for Trucks
Towable Engine Hoist



Minimum	Day	Week	4-Week
---------	-----	------	--------

Drywall & Material Lifts

Drywall Lift - 5' to 10'
Material Lift 24' 650 lb. Lift Capacity
Fork Extensions



Minimum	Day	Week	4-Week
---------	-----	------	--------

Porta Power Rams

10 Ton Ram
10 Ton Power Pump with Hose



Minimum	Day	Week	4-Week
---------	-----	------	--------

Roustabouts Pipe Mover

Roustabout 2K# - 15' Narrow Base
Roustabout 2K# - 15'
Roustabout 2K# - 25'
Tee Head Extension Bar-1K#
Tee Head Extension Bar-1K#



Minimum	Day	Week	4-Week
---------	-----	------	--------

Glass Handling Suction Cups

8" Diameter -
Lift Glass Weighing 125 lbs.



Minimum	Day	Week	4-Week
---------	-----	------	--------

Lawn & Garden

Hand Lawn Tools

Hand Fence Post Driver
3 Gallon Hand Sprayer
Propane Weed Burner



Minimum	Day	Week	4-Week
---------	-----	------	--------

Lawn Roller

18" Diameter x 24" Hand Roller



Minimum	Day	Week	4-Week
---------	-----	------	--------

Lawn Aerators & Lawn Rakes

Bluebird 4 hp. 18" width with 3" Aerating Depth
Bluebird 5.5hp. 18" width with Bag & Tray



Minimum	Day	Week	4-Week
---------	-----	------	--------

Sod Cutters

Ryan 5.5 hp.
18" Cutting Width



Minimum	Day	Week	4-Week
---------	-----	------	--------

Stump Grinders

Bluebird 13 hp.
with 12" Cutting Depth
Vermeer SC30TX
Hyd. Swing Track Unit



Minimum	Day	Week	4-Week
---------	-----	------	--------

Wood Chippers

Vermeer 25hp. Gas Engine
6" dia. Log Capacity



Minimum	Day	Week	4-Week
---------	-----	------	--------

Setting the Standard
FRANK'S
SUPPLY COMPANY, INC.
in Quality Equipment

FAMILY OWNED AND OPERATED SINCE 1953

Power Tools & Powder Actuated

Selection Guide

We'll help you match the power tool to the job you have to do. If you are using an extension cord, it is important to have the correct size of cord. Inadequate extension cords can result in damage to the tool. See Charts below.

- Car Polishers/Disc Sanders
- Grinders
- Rotary Hammers
- Chipping Hammers
- Impact Wrenches
- Rod Drivers
- Drills
- Nibblers
- Sanders
- Drywall Screw Guns
- Saws
- Extension Cords
- Power Shears

When an extension cord is used, it should always be a 3 wire cord to permit proper grounding of the tool. As the distance from the supply outlet increases, heavier gauge extensions are required. The use of extension cords of inadequate size wire causes a serious drop in voltage, loss of power and possible motor damage.

Amperage Rating (on nameplate)	0.0 to 2.0	2.1 to 3.4	3.5 to 5.0	5.1 to 7.0	7.1 to 12.0	12.1 to 16.0	16.1 to 20.0
Extension Cable Length	Wire Size						
25 ft.	18	18	18	18	16	14	12
50 ft.	18	18	18	16	14	12	10
75 ft.	18	18	16	14	12	10	8
100 ft.	18	16	14	12	10	8	8
150 ft.	16	14	12	12	8	8	6
200 ft.	16	14	12	10	8	6	4
300 ft.	14	12	10	8	6	4	4
400 ft.	12	10	8	6	4	4	2
500 ft.	12	10	8	6	4	2	2
600 ft.	10	8	6	4	2	2	1
800 ft.	10	8	6	4	2	1	0
1000 ft.	8	6	4	2	1	0	0

Note: Extension cord sizes chosen to assure a drop of not over five (5) volts at rated load of tool. Flexible extension cords not normally available under ten (10).

Wire Size AWG	Maximum Amps	Voltage drop @ Maximum Amps for Given Wire Lengths			
		25'	50'	75'	100'
4	70	0.87	1.74	2.60	3.48
6	55	1.08	2.17	3.25	4.35
8	40	1.25	2.51	3.87	5.03
10	30	1.50	3.00	4.50	6.00
12	25	1.98	3.97	5.95	7.95
14	18	2.27	4.55	6.82	9.10
16	13	2.65	5.22	7.84	10.45

Note: When selecting extension cord, voltage drop should not exceed five volts for the rated amps and length of cord required.

Electric Power Tools

Drills

- Dewalt 3/8" Drill
- Dewalt 1/2" Drill
- Dewalt 1/2" Cordless Drill
- Dewalt 1/2" Right Angle Drill
- Champion 3/4" Magnetic Drill Press
- Annular Cutter Adapter



Minimum Day Week 4-Week

Impacts

- 1/2" Impact Wrench
- 3/4" Impact Wrench



Minimum Day Week 4-Week

Heat Guns

- Heat Gun (650° to 900°)



Minimum Day Week 4-Week

Grinders/Polishers

- 4 1/2" Angle Grinder
- 7" - 9" Angle Grinder
- Car Polisher



Minimum Day Week 4-Week

Shears

- 14 Gauge Shear
- 14 Gauge Nibbler
- 18 Gauge Nibbler



Minimum Day Week 4-Week

Woodworking

- 4" Orbital Sander
- 3" Belt Sander



Minimum Day Week 4-Week

Saws

- Jig Saw
- 7 1/4" Circular Saw



Minimum Day Week 4-Week

Saws

- Porta Band Saw
- Cut Saw



Minimum Day Week 4-Week

Screw Guns

Screw Gun (TEKS & Drywall)



Minimum Day Week 4-Week

Rotary Hammer

1" SDS Rotary Hammer
 1 9/16" Spline Rotary Hammer
 Accessories Include:
 7/8", 1", 2" Chisels
 Moil Point
 3/16" to 1" SDS Bits
 3/8" to 2" Spline Bits
 Spline to SDS Adapter
 7", 16" Spline Core Bit Adapter
 1-1/4" to 5" Rotary Hammer Core Bits



Minimum Day Week 4-Week

Demolition

20 lb. Demolition Hammer
 60 lb. Demolition Hammer
 Accessories Include:
 1", 2", 3" Chisel
 Moil Point
 Asphalt Spade



Minimum Day Week 4-Week

Extension Cords

Cords

12/3 x 50' Extension Cord
 12/3 x 100' Extension Cord
 10/3 x 50' Extension Cord
 10/3 x 100' Extension Cord



Minimum Day Week 4-Week

Cord Accessories & Power Distribution Box

30 amp Pigtail
 with Twist or Straight Lock
 Power Distribution Box
 100' Distribution Cord
 50' Distribution Cord
 50' 4/0 Distribution Cables



Minimum Day Week 4-Week

Powder Actuated

Stud Guns

.27 Caliber - Strip Load



Minimum Day Week 4-Week

Pumps & Accessories

Selection Guide

Frank's Supply has pumps for any application...

- Diaphragm Pumps
- Submersible Pumps
- Hydrostatic Test pumps
- Trash Pumps
- Hose and Accessories

The Job: Let us know what & how much material you're pumping. Pumps are available in gas, diesel or electric power. If an electric pump is used, how far will it be from the power source? What is the amperage and voltage of the power source?

Suction Lift: Vertical distance from the water to the pump should be as short as possible.

Total Head: Total vertical discharge capability of the pump. Capability decreases as head increases

Trash Pumps: Centrifugal. Designed to pump high volumes of clear water or water mixed with solids.

Mud Pumps: Diaphragm type. Pumps low volumes of high solid content & muddy or mucky water.

Submersible Pumps: Electric centrifugal clear water pumps that totally submerge for high efficiency & almost 100% removal of water from trenches, holes, footings, or other confined areas.

Priming: Some types of pumps are self-priming & can be left unattended. Others will suffer severe damage if allowed to run dry. Consult your Frank's Supply representative for details.

Pump Selection

Pump Selection			
Application	Diaphragm	Trash	Submersible
Clean Water.....	X	X	X
Slimey Water.....	X	X	X
Muddy Water.....	X	X	
Mucky Water.....	X	X	
Silt Water.....	X	X	
Abrasive Water.....	X	X	
High Solid Content.....	X	X	
Slow Seepage			
Ditch Water.....			X
Fast Seepage			
Ditch Water.....		X	X
Septic Tank.....	X	X	
Manholes.....		X	X

FAMILY OWNED AND OPERATED SINCE 1953

Pump Performance - G.P.M.

Total Head	Diaphragm Pump	Trash Pump		Submersible Pump		
	3"	3"	6"	1 1/2"	2"	3"
10'	65	330	1200	50	83	300
20'	55	310	1195	45	75	280
30'	45	305	1180	40	60	270
40'	35	300	1175		20	260
50'	25	275	1160			245
60'	15	215	1150			180
70'	5	170	1120			160
80'		88	950			130
90'		25	700			85
100'			450			50

Note: G.P.M. discharge based on 10' suction lift.

Pumps

Hydrostatic Pumps

Hydrostatic Test Pump - 500 psi
Hydrostatic Test Pump - 10,000 psi



Minimum Day Week 4-Week

Submersible Pumps

2" Electric Submersible Pump



Minimum Day Week 4-Week

Trash Pumps

2" Trash Pump
3" Trash Pump
4" Trash Pump



Minimum Day Week 4-Week

Diaphragm Pump

3" Diaphragm Pump



Minimum Day Week 4-Week

Pump Accessories

Garden Hoses

3/4" x 50' Hose



Minimum Day Week 4-Week

Discharge Hoses

2" x 50' Hose
3" x 50' Hose
4" x 50' Hose



Minimum Day Week 4-Week

Suction Hoses

2" x 20' Hose
3" x 20' Hose
4" x 25' Hose



Minimum Day Week 4-Week

Adapters

2 1/2" NST to 3/4" NPT
2 1/2" NST to 1 1/2" NPT
2 1/2" NST to 2" NPT
2 1/2" NST to 1 1/2" IPT



Minimum Day Week 4-Week

Trailers

Selection Guide

Safe hauling requires the proper matching of trailer, equipment & tow vehicle. Below are some questions to help in your selection.

Load: What are you hauling? How much does it weigh? What is the width, length, & height?

Tow Vehicle: What size truck will be pulling the load? Is it equipped with a hitch & ball? How far are you going with the load?

Note: Some rental equipment includes a trailer. Check the specific equipment listing in this catalog.

Trailers

Single Axle

Ditch Witch, Felling and Trail Max
1540 lb.
2200 lb.
5000 lb. 12' 6" Deck



Minimum Day Week 4-Week

Tandem Axle

- 6000 lb. - 12' Deck
- 7000 lb. - 16' Deck
- 10,000 lb. - 16' Deck
- 12,000 lb. - 16' & 20' Decks



Minimum Day Week 4-Week

Dump Trailer

- 12' Dump Bed
- 6690lb Capacity



Minimum Day Week 4-Week

Trailer Accessories

Accessories

- 2" ball with ball mount
- 2-5/16" ball with ball mount
- 2" trailer towing ball
- 2-5/16" trailer towing ball
- 2" Pintle/Ball combo
- Trailer Light Pigtail
- Chains & Load Binders
- Tie Down Straps



Minimum Day Week 4-Week

Water Trailers

Water Wagons & Trucks

- 500 Gallon Water Wagon with 2" Pump



- 2000 Gallon Single Axle Water Truck - Non CDL

- 4000 Gallon Tandem Axle - CDL Required



Note: All rates are Plus Fuel

Minimum Day Week 4-Week

Welding Equipment

Selection Guide

From a spot repair to structural steel, Frank's Supply has the welding equipment to get the job done.

- Plasma Cutter
- Arc Welders
- Oxy/Acetylene

The Metal: What are you welding? What kind of metal? How thick is it? Are you spot welding or beading?

The Welder: How many amps do you need? What duty rating? What size rod? How much cable do you need? (See Chart Below). Welders are available in gas, diesel or electric power. Are there any environmental restrictions in the use of gas or diesel? If an electric welder is used? How far will it be from the power source? What is the amperage and voltage of the power source? Do you prefer a portable or towable welder?

Welding Equipment

Amps	100	150	200	250	300	350	400	450	500	600
Ft. from Terminals:										
50 ft.	2	2	2	2	1	1/0	1/0	2/0	2/0	3/0
75 ft.	2	2	1	1/0	2/0	2/0	3/0	3/0	4/0	
100 ft.	2	1	1/0	2/0	3/0	4/0	4/0			
125 ft.	2	1/0	2/0	3/0	4/0					
150 ft.	1	2/0	3/0	4/0						
175 ft.	1/0	3/0	4/0							
200 ft.	1/0	3/0	4/0							
225 ft.	2/0	4/0								
250 ft.	2/0	4/0								
300 ft.	3/0									
350 ft.	4/0									
400 ft.	4/0									

Note: The welding cable cover should be oil and moisture resistant. The data above is based on the use of direct current.

Plasma Cutters

Air Plasma Cutter 3/8" Capacity
(Separate Air Supply Required)



Minimum Day Week 4-Week

Portable

- 140 amp MIG Welder Package
- Miller 180 amp Portable Gas Welder Package
- Oxy-Acetylene Welding Outfit
- Extra 50 ft. Welding Leads
- Pipe beveling machine - No.2 & No. 3



Minimum Day Week 4-Week

FAMILY OWNED AND OPERATED SINCE 1953

Towable

Miller 300 amp Diesel Welder
 7.5 KW Single Phase
 10 KW Three Phase
 Miller 400 amp Diesel Welder



Minimum Day Week 4-Week

Vehicles

Golf Carts

Gas Club Car
 with Cargo Box



Minimum Day Week 4-Week

Utility Carts

Kawasaki Mule 3000 2 Se
 with Large Cargo Box

Polaris Ranger
 570 Crew 4 Seats



Minimum Day Week 4-Week



THE COMPLETE SOURCE

- Aerial Work Platforms
- Air Compressors
- Air Tools
- Backhoes
- Bobcat Loaders
- Cable Pullers
- Concrete Saw
- Core Drilling Rigs
- Cut-Off Saws
- Diamond Blades
- Forklifts
- Lasers
- Light Towers
- Mixers
- Ripe Benders
- Ride-On Trenchers
- Rotary Hammers
- Scaffolding
- Scissor Lifts
- Compaction Equipment
- Welders

For Construction & Industry

Represents Over 400 Quality Manufacturers

DEWALT - STANLEY - GREENLEE - GENIE - MILLER

WERNER - TARGET - KNAACK - STARRETT - UNITED ABRASIVES

MSA - GREENFIELD - COOPER - INGERSOLL-RAND

Frank's Supply is Proud to be a Member of these Fine Associations...



Construction/Industrial Supply Distribution Network





FAX OR MAIL THIS 2-PAGE APPLICATION TO:
ACCOUNTS@FRANKS-SUPPLY.COM

Frank's Supply
3311 Stanford Drive NE
Albuquerque, NM 87107
Fax: 505-884-0244

Full Legal Name/Business Entity:
Doing Business as (DBA):
Physical Address: City: State: Zip:
Billing Address: City: State: Zip:
Phone: Fax: Cell:
Email:

Type of Business: Contractors License#: Years in Business:
Bonding Company: Contract: Phone#:
Amount of Credit being Requested \$ Tax Certificate Included? Yes No (if yes, original required)
Purchase Order Required? Dun & Bradstreet#: Authorized Signers:
Corporation Partnership Proprietorship Tribal Entity FID# State ID#

FINANCIAL INFORMATION

Bank: Contact: Account#:
Address: Phone#:

TRADE REFERENCES

Name Contact Address (City, State, & Zip) Fax # Account #
1.)
2.)
3.)

PERSONAL INFORMATION ON OWNER/PRINCIPALS/GUARANTORS

Name/Title: DOB: Soc. Sec. #:
Home Address: City: State: Zip:
Annual Income \$ Monthly Housing Payment \$

TERMS

1% 15 days from Invoice, Net 30 days.

Person signing below, agrees to pay interest at the rate of 1.5% per month (18% per annum) on all past due balances plus all cost of collection and reasonable attorney's fees, pre- and post-judgement, if account is placed for collections. Applicant understands and agrees it is submitting itself to the jurisdiction of New Mexico and venue proper in the County of Bernalillo, and any claims of a sovereign status are hereby waived. Applicant authorized Frank's Supply Co. Inc., to obtain any information from the references listed and/or from any other source Frank's Supply Co. Inc., determines is necessary prior to extending credit. If Corporation, undersigned guarantor jointly and severally, hereby personally guaranty unconditionally the payment of any sums or obligations which are now or shall hereafter become due by the Applicant to the Creditor. Frank's Supply Co. Inc., is a provider of payment information to credit reporting agencies.

Signature: Date:
Name (Print or Type):

★ Signature of Officer / Owner is required before credit can be approved



GUARANTY AGREEMENT

In consideration of the extension of credit granted by Frank's Supply Co. Inc., the undersigned hereby personally and unconditionally guaranty payment without presentment, demand or notice, of whatever amount the Applicant shall at any time be owing. This shall be an open, absolute, and continuing guaranty, and shall continue in force notwithstanding any change in the form of indebtedness or renewals or extensions granted by Frank's Supply Co. Inc., unless and until expressly revoked by written notice via registered mail provided any such written revocation shall not affect any indebtedness contracted prior to receipt of the revocation. The undersigned further agrees to pay all costs of collection whether incurred pre- or post- judgement, including attorney's fees and interest.

Date: _____ Signed: _____
Guarantor (Sign Individually)

Date: _____ Signed: _____
Guarantor (Sign Individually)

If applicable, please submit tax exempt certificate and/or certificate of insurance. (See Insurance Certificate Requirements)

El Paso, TX
1211 Barranca Drive
Toll-Free (800) 748-3726



Hobbs, NM
2230 W. Bender Rd.
Toll-Free (866) 475-8665

Albuquerque, NM
3311 Stanford Drive
Toll-Free (800) 432-5254

Farmington, NM
2655 E. Bloomfield Highway
Toll-Free (800) 541-8449

Los Alamos, NM
268 DP Road
Toll-Free (888) 568-1100

The Complete Source For Construction and Industry

- Aerial Work Platforms
- Air Compressors
- Air Tools
- Backhoes
- Bobcat Loaders
- Cable Pullers



- Compaction Equipment
- Concrete Saws
- Core Drilling Rigs
- Cut-Off Saws
- Diamond Blades
- Forklifts

- Lasers
- Light Towers
- Mixers
- Piercing Tool
- Pipe Benders
- Ride-On Trenchers



- Rotary Hammers
- Scaffolding
- Scissor Lifts
- Welders



GSA Contract #
GS-06F-0031L

www.franks-supply.com

Family Owned and
Operated Since 1953

JOB INFORMATION SHEET

Customer: _____ Phone: _____
Street Address: _____ Email: _____
City: _____ State: _____

Customer: Owner General Contractor Subcontractor Material Supplier Other Leasehold Interest

DBE/MBE-Commercially Useful Function Verified

PROJECT INFORMATION

NAME _____
STREET ADDRESS _____
PHONE _____
EMAIL _____
CITY _____ STATE _____ ZIP _____
SCR Number _____ (UT Projects Only)
MNLr Number _____ (IA Residential)

OWNER / AWARDING AUTHORITY

NAME _____
STREET ADDRESS _____
PHONE _____
EMAIL _____
CITY _____ STATE _____ ZIP _____

LENDER - (CA & AZ PROJECTS)

NAME _____
STREET ADDRESS _____
PHONE _____
EMAIL _____
CITY _____ STATE _____ ZIP _____

ARCHITECH

NAME _____
STREET ADDRESS _____
PHONE _____
EMAIL _____
CITY _____ STATE _____ ZIP _____

Well Site / GPS Location: _____
Estimated Quantity: _____
Rental: Estimated Monthly Fee: _____

This job will have: One Furnishing Several furnishings Do no know

Signature: _____

Customer: _____

GENERAL CONTRACTOR

NAME _____
STREET ADDRESS _____
PHONE _____
EMAIL _____
CITY _____ STATE _____ ZIP _____

PRIME'S BONDING COMPANY

Is this a private bonded job?

NAME _____
STREET ADDRESS _____
PHONE _____
EMAIL _____
CITY _____ STATE _____ ZIP _____

NAME _____
STREET ADDRESS _____
PHONE _____
EMAIL _____
CITY _____ STATE _____ ZIP _____

SUB'S BONDING COMPANY or LESSEE (if applicable)

NAME _____
STREET ADDRESS _____
PHONE _____
EMAIL _____
CITY _____ STATE _____ ZIP _____

Estimated Dollar Value: _____

Estimated Term of Rental: _____

Date: _____

AWARDS

DEPARTMENT OF ENERGY SMALL BUSINESS CONTRACTOR OF THE YEAR -2006

2006



In July 2007, on behalf of Frank's Supply, our President Melissa Deaver-Rivera collected a plaque for the "National Small Business Sub Contractor of the Year" award from The Department of Energy

AGC OUTSTANDING AFFILIATE SUPPLIER



**2006
2009
2011
2013
AND
2016
2018**

2009 AGC Presidents Award of Excellence



Notes



SAFETY



TRAINING

Frank's Supply provides safety training in a number of areas. These on site safety programs cover situations such as aerial platform certifications, hand tool safety, ladder and scaffolding safety, fall protection, power tool safety, etc. Frank's factory trained safety coordinator provides a professional presentation to its customers.

Aerial Platform Certification

This training is to be general in nature since it covers safe operating instructions for all types of aerial platforms. The course consists of four key areas of learning - it covers responsibility, safety and operation, and finishes with practical hands-on operation. Trainees will receive aerial platform operation and safety certification cards at completion of course.

Forklift Operator Certification

Course covers both warehouse and rough terrain forklift operation. The course consists of two key areas of learning - the importance of forklift safety procedures and to demonstrate safe forklift operation. Trainees will receive a three year forklift certification by successfully completing written and hands-on forklift safety tests.



Ladder Safety

General training in the proper use of ladders to reduce the possibilities of injury on the job. The course consists of two key areas of learning - it covers using the wrong ladder and how to choose the right ladder; misusing or abusing climbing equipment and how to use and set-up a ladder correctly. Trainees will learn how to read and understand the decal codes on the ladder.

Scaffold Safety

General training in the proper erection of scaffolding and a review of OSHA's Safety Standards for Scaffolds. The course consists of two key areas of learning - review of scaffold safety standards and what they mean. Plus trainees receive practical hands-on erection of scaffold. Trainees will become a "competent scaffold erector" for the construction jobsites.

Other training programs offered include: Hand Tool Safety, Skid Steer Safety and Operation, Powder Actuated Tool Certification, Power Tool Safety and Fall Protection.

Call Frank's Supply for details on all training programs.

ATTENTION FEDERAL GOVERNMENT AGENCIES

*Rent Today on Frank's Supply's
GSA Federal Supply Contract*

QUALITY TOOLS & EQUIPMENT

FRANK'S
SUPPLY COMPANY, INC.

SALES • RENTALS • SERVICE

Contract Number GS-06F-0031L
Check out our GSA pricing at GSA Advantage
www.gsaadvantage.gov

GSA

Search Frank's Supply

Five Convenient Locations...

ALBUQUERQUE, NM

3311 Stanford Dr. NE, 87107
(505) 884-0000
(800) 432-5254
FAX (505) 884-1787
info@franks-supply.com

EL PASO, TX

1211 Barranca Dr., 79935
(915) 592-9700
(800) 748-3726
FAX (915) 592-3311
elpaso@franks-supply.com

FARMINGTON, NM

2655 E. Bloomfield Hwy., 87401
(505) 327-9831
(800) 541-8449
FAX (505) 326-0271
farmington@franks-supply.com

HOBBS, NM

2230 W. Bender Road, 88240
(575) 397-0220
(866) 475-8665
FAX (575) 397-0158
hobbs@franks-supply.com

LOS ALAMOS, NM

268 DP Road, 87544
(505) 661-1100
(888) 568-1100
FAX (505) 661-2509
losalamos@franks-supply.com

Store Hours

Monday - Friday 7:00 a.m. to 5:00 p.m. • Closed Saturdays & Sundays